



MONTHLY MEMBERSHIP PROGRESS REPORT

Results as of: 3/31/2015

Multiple District 110

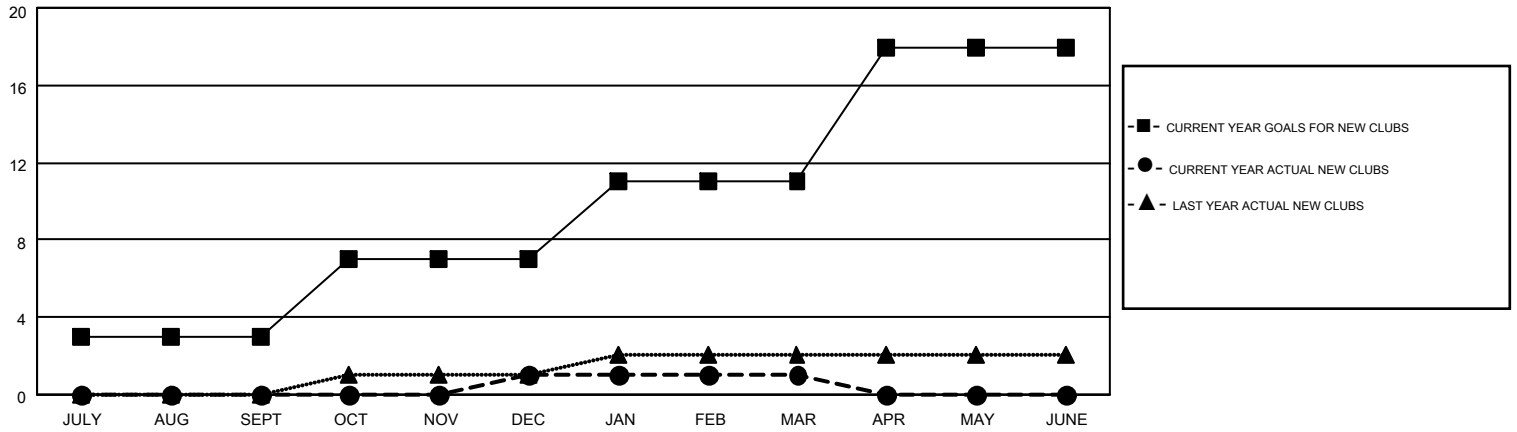
LOCATION: NETHERLANDS

GMT: ELISABETH HADERER

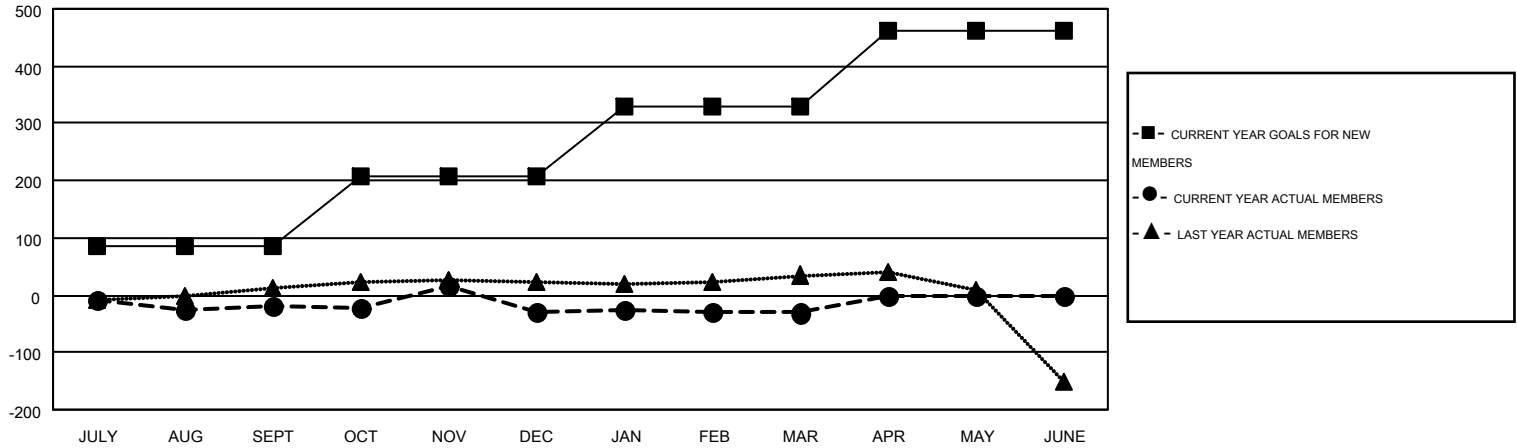
GMT CA 4

Clubs					Members				
RESULTS FOR 2014-2015					RESULTS FOR 2014-2015				
QUARTER	NEW CLUB GOAL	NEW CLUBS	DROPPED CLUBS	NET GAIN/LOSS	QUARTER	NEW MEMBER GOAL	CHARTER AND NEW MEMBERS ADDED	DROPPED MEMBERS	NET GAIN/LOSS
JULY/AUG/SEPT	3	0	0	0	JULY/AUG/SEPT	85	60	79	-19
OCT/NOV/DEC	4	1	0	1	OCT/NOV/DEC	121	184	193	-9
JAN/FEB/MAR	4	0	0	0	JAN/FEB/MAR	124	131	134	-3
APR/MAY/JUNE	7	0	0	0	APR/MAY/JUNE	133	0	0	0

GOALS AND ACTUAL NEW CLUBS CUMULATIVE



GOALS AND ACTUAL MEMBERS CUMULATIVE



DROPPED CLUBS: 0	191 CLUBS OF 432 ADDED 1 OR MORE NEW MEMBERS	<u>GENDER DISTRIBUTION</u>	
<u>DROPPED MEMBERS</u>		MALE	9,987 (86.39%)
DECEASED	41	FEMALE	1,573 (13.61%)
CLUB CANCELLED	0	<u>FAMILY UNIT MEMBERS</u> 12	
OTHER	365	<u>HEAD OF HOUSEHOLD</u> 6	
TOTAL	406	<u>NON-HEAD OF HOUSEHOLD</u> 6	

[CLICK HERE FOR HEALTH ASSESSMENT DATA](#)